



INCIDENT ALERT

General Information

Date of Incident	2016
Type of Incident	Fatality

About the Person

Occupation of Person	Vacuum truck operator
Experience of Person	Unknown
HPWJ Training Level	Unknown
Other Training	Unknown
No. of Hours Completed	Unknown

About the Incident

Time of incident	Unknown
Result of Injury/Damage	Fatality
Lost Days	
Description of Incident	
What Equipment Category	Pipe cleaning
Equipment Used	750bar jetting system with a HPWJ hose and starter bar.
What Was Person Doing	Job set up included a nozzle with rear facing jets connected by a rigid length of pipe to a flexible hose. The nozzle was inserted through an opening perpendicular to the pipe with a back out preventer in place. Feeling muscle strain in his shoulder, the nozzle operator stretched his arm towards the pump operator who believed the stop sign was being given. The pump operator relieved pressure, causing the nozzle to free fall past the opening it had been inserted into. The nozzle operator shouted to the pump operator to re start cleaning.
What happened unexpectedly	The retro force on the nozzle pushed it through the opening, and a high pressure water jet hit the vacuum hose operator in the abdomen.

Corrective Action

What Immediate Action	
-----------------------	--

Preventative Action

Elimination	
Substitution	
Isolation or barriers	Changes to setup/tooling to prevent the nozzle from exiting through the opening.
Engineering	
Administration	Better communication between nozzle operator and pump operator.
PPE	

LEARNINGS

The above information was posted in the may edition of WJTA-IMCA Jet News
From the information received there is no mention that the nozzle operator was using a hold to activate device (foot pedal).

Would this incident occur within Australia? If the set up was in accordance with AS/NZS 4233.1: 6.8.2 which states: "The operator inserting the lance and nozzle assembly shall have direct control of the water flow to the nozzle". The chance of a similar incident could be eliminated.

Incident Report: Fatal Waterjet Cut During Vertical Pipe Cleaning Operation

Sequence of Events

A crew consisting of pump operator, nozzle operator, vacuum truck operator, and vacuum hose operator was performing high pressure waterjetting at 10,000 psi to clean the interior of a vertical pipe from the bottom up and using vacuum equipment to contain the wastewater.

Job setup included a nozzle with rear facing jets connected by a rigid length of pipe to a flexible hose. The nozzle was inserted through an opening perpendicular to the pipe with a backout preventer in place.

Feeling muscle strain in his shoulder, the nozzle operator stretched his arm towards the pump operator who believed the stop sign was being given. The pump operator relieved pressure, causing the nozzle to freefall past the opening it had been inserted into. The nozzle operator shouted to the pump operator to restart cleaning. The nozzle sprang through the opening, and a high pressure waterjet hit the vacuum hose operator in the abdomen.

Recommendations

Better communication between nozzle operator and pump operator, as well as changes to setup/tooling to prevent the nozzle from exiting through the opening.

Liquid Vacuum Truck Incident in Texas

During a recent incident in Texas involving a liquid vacuum truck, two non-compatible chemicals were mixed, resulting in an explosion that caused fatalities.

Be careful what you mix!



Figure 1. Access opening for cleaning

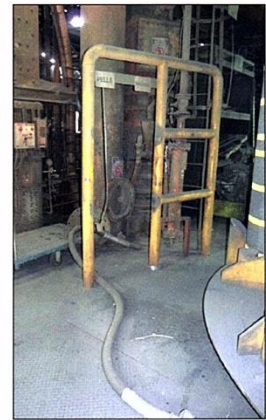


Figure 2. Vacuum hose

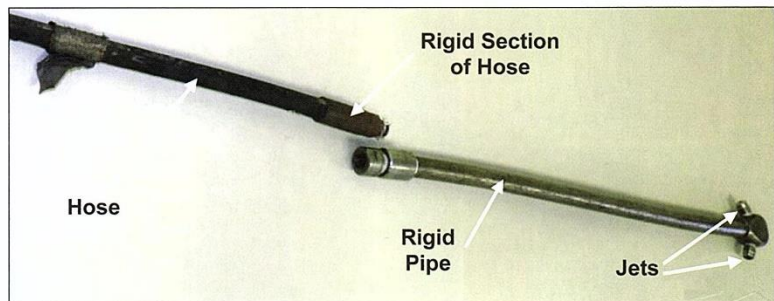


Figure 3. Mole used during the incident

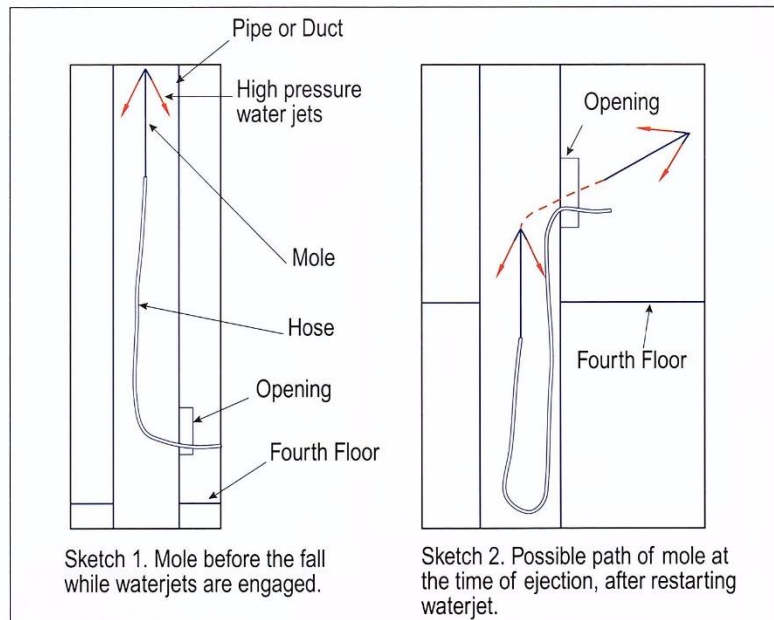


Figure 4